

CEREC 3D/inLab 3D: Service Pack V3.65

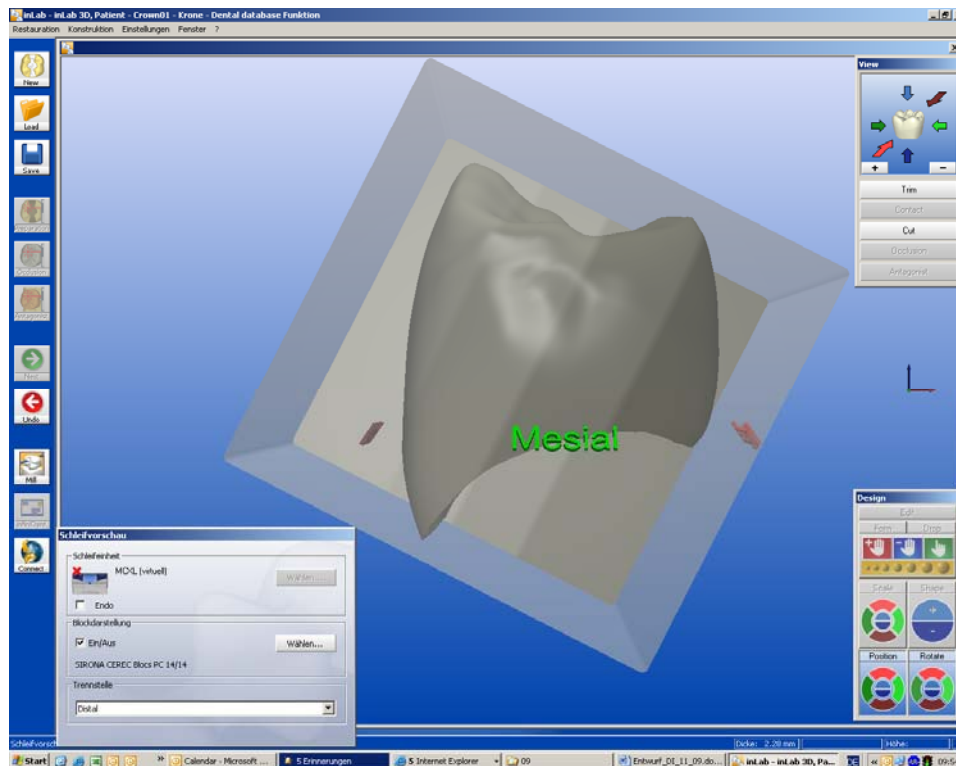
Service Pack V3.65 is available for downloading free of charge from the inLab/ CEREC sections of the Sirona website. This service pack is recommended to all users of CEREC 3D V3.60, inLab 3D V3.60 and inLab 3D V3.65 for Abutments.

Installation requirements:

inLab 3D V3.60 or CEREC 3D V3.60 must already be installed. Service Packs V3.61 and V3.63 are included in Service Pack V3.65 and do not need to be installed.

Contents:

Rotation of restorations in the milling preview for polychromatic blocks



In combination with a CEREC/inLab MC XL milling machine it is now possible to rotate restorations by $\pm 90^\circ$ within a polychromatic block in order to achieve a better aesthetic result. This applies to the following materials:

- CEREC Blocs PC
- VITA Triluxe
- VITA Triluxe forte
- IVOCLEAR VIVADENT IPS Empress CAD multi
- VITA CAD Temp multiColor

The restoration can be moved and rotated by pressing the “Position” and “Rotate” buttons. The diagonal positioning of the restoration necessitates a preliminary milling process in order to ensure that the bur has unrestricted access to the lumen. This takes a few minutes. During this preliminary milling process, the edges of the block are removed.

“CEREC meets GALILEOS” interface

When the OPEN SI dongle is inserted, it is possible to export *.SSI files. Previously, this function had been dependent on the installation of Service Pack V3.63.

Optimized milling of composite materials (MC XL only)

The milling process has been modified to facilitate the improved machining of composite materials.

Optimized base widening (MC XL only)

The base widening algorithm has been optimized. This improves the occlusal/incisal fit of crowns.

Sprue location

Due to the modifications to the milling process, the sprue location may appear in an unaccustomed location when the “optimized milling mode” is activated.

Troubleshooting

In some cases, the Scale tool did not function properly in the reduction mode (inLab only). This problem has now been resolved.

In some cases, the restoration was not trimmed in line with the user’s specifications. This problem has also been resolved.